

Model No.
SG797CH

StreetGlow®

The Leader In Auto-Neon® & Performance Lighting

Installation Instructions

PLEASE READ THESE INSTRUCTIONS CAREFULLY BEFORE STARTING INSTALLATION.

LAMP MOUNTING INSTALLATION

1. Select desired location of lamps, position lamp bracket using adhesive tape (remove all dirt, wax, etc.)
2. Using 1/4" drill bit, drill mounting holes for lamp bracket and install bolts, lock washer and nuts (Do not over tighten). (Figure 1)
3. Mount lamps on brackets, with fog lamps in the center most position. (Figure 2) Make sure the vent hole is facing down on the lamp housing.

WIRE HARNESS INSTALLATION

1. CAUTION !! IN ORDER TO AVOID INJURIES AND SHORT CIRCUITS, REMOVE THE (-) NEGATIVE TERMINAL FROM THE BATTERY BEFORE ATTEMPTING ANY ELECTRICAL CONNECTIONS.
2. Mount relay to an accessible place in engine compartment using the sheet metal screw provided.
3. Connect the wiring harness relay connector to mounted relay. (Figure 2)
4. Connect BLACK GND wire of harness to chassis ground of the vehicle with ring terminal, then connect yellow wire from harness assembly to fit on side marker lamp (+). (Figure 2)
5. Connect the BLUE, GREEN, YELLOW AND BLACK wires of harness to the corresponding wires on the lamps.
6. Mount the switch in a convenient location on your dash.
7. Connect 4 pin male connector of harness to the switch's female connector, and then connect the RED wire from the 4 pin male connector to vehicle's low beam circuit. Connect BLACK wire from 4 pin male connector to chassis ground. (Figure 2)
8. Reconnect the NEG (-) Terminal on the battery and install the two 15amp. fuses in harness for the lamps.

TESTING PROCEDURES

1. Start vehicle.
2. Turn the vehicle's light to the "ON" position.
3. Turn on the power switch. (If the lamps turn on at this point, there should be no problem with the connections) If the lamps do not work, go back to steps (1 - 8) of the installation and check all the processes over again.
4. With lights - ON - Aim lamps for proper alignment. A towel or heat resistant gloves should be used as the lamps are extremely HOT.
5. Turn off vehicle.

CONTENTS

- 2 FOG / DRIVING / PARKING LIGHTS
- 2 POWER RELAYS
- 1 WIRE HARNESS
- 1 STREETGLOW LED ILLUMINATED 3 WAY POWER SWITCH
- 2 DOUBLE FACE ADHESIVE TAPE FOR MOUNTING BRACKETS
- 1 DOUBLE FACE ADHESIVE TAPE FOR SWITCH
- 1 QUICK SPlice CONNECTOR
- 1 1/8" X 1/4" SCREW FOR RELAY
- 4 5/16" X 5/8" HEX BOLTS
- 2 1/4" X 5/8" HEX BOLTS
- 4 5/16" LOCK WASHER
- 2 1/4" LOCK WASHER
- 1 INSTALLATION INSTRUCTIONS

CAUTION !

1. THE LAMP UNITS WILL BE EXTREMELY HOT WHEN THEY ARE ON, AND IMMEDIATELY AFTER USE.
2. NEVER WASH THE CAR WHILE THE LAMPS ARE ON OR WHILE THEY ARE HOT.
3. KEEP THE WIRING HARNESS AWAY FROM MOVING PARTS OR EXCESSIVE HEAT BY USING TIE STRAPS (NOT SUPPLIED).
4. IF THE FUSE BURNS OUT, INVESTIGATE THE CAUSE FIRST, CORRECT IT, THEN REPLACE THE FUSE.
5. USE ONLY STREETGLOW H3, 55 WATT XENON WHITE® H.I.D. BULBS.

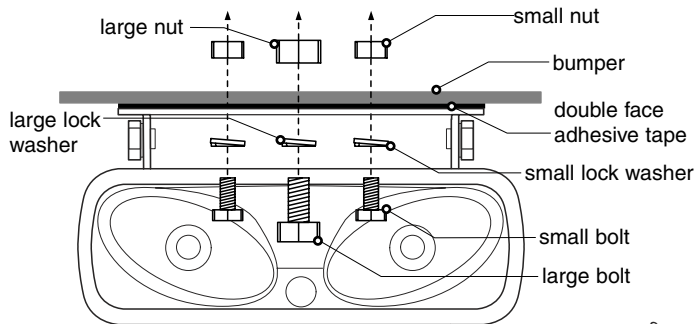


Figure 1

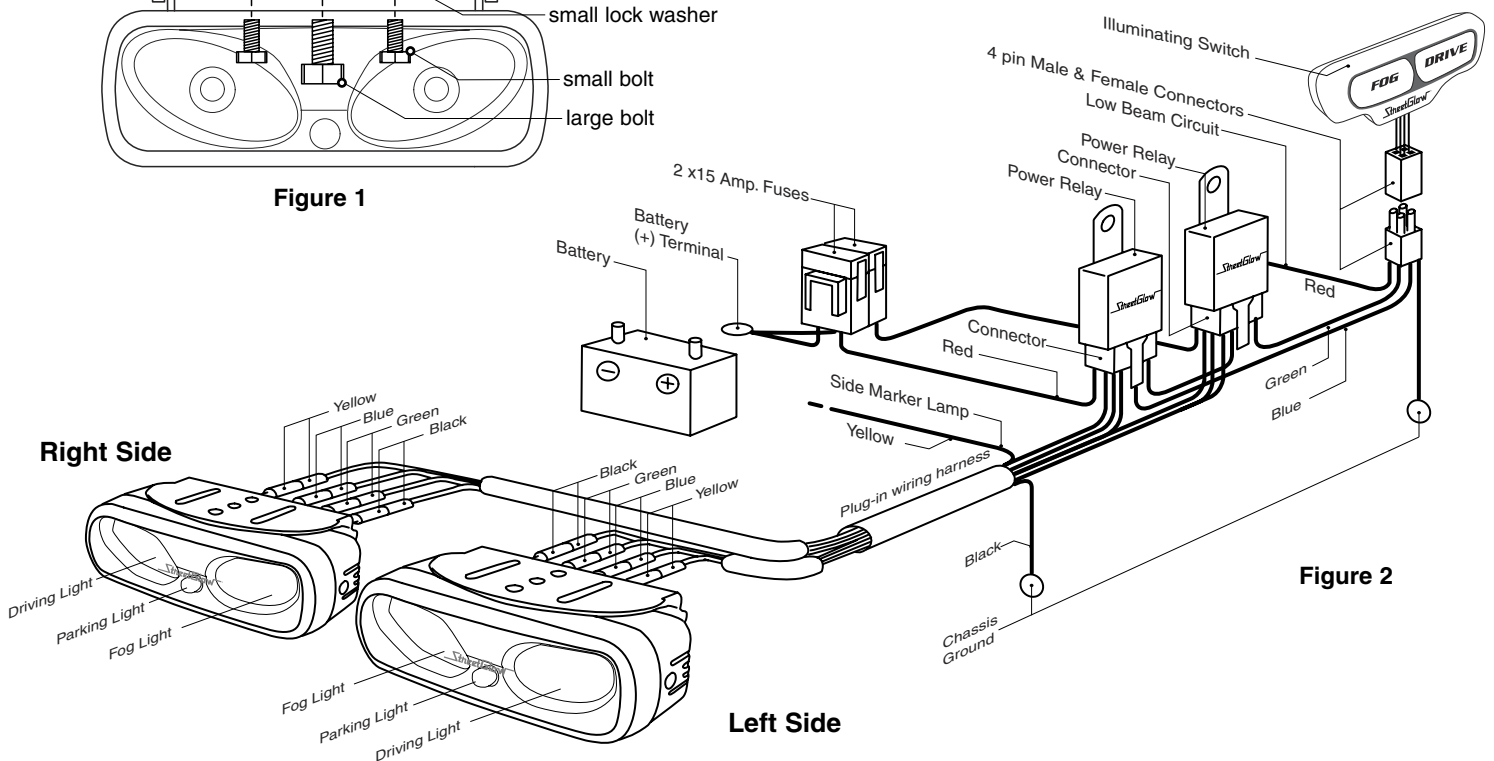


Figure 2